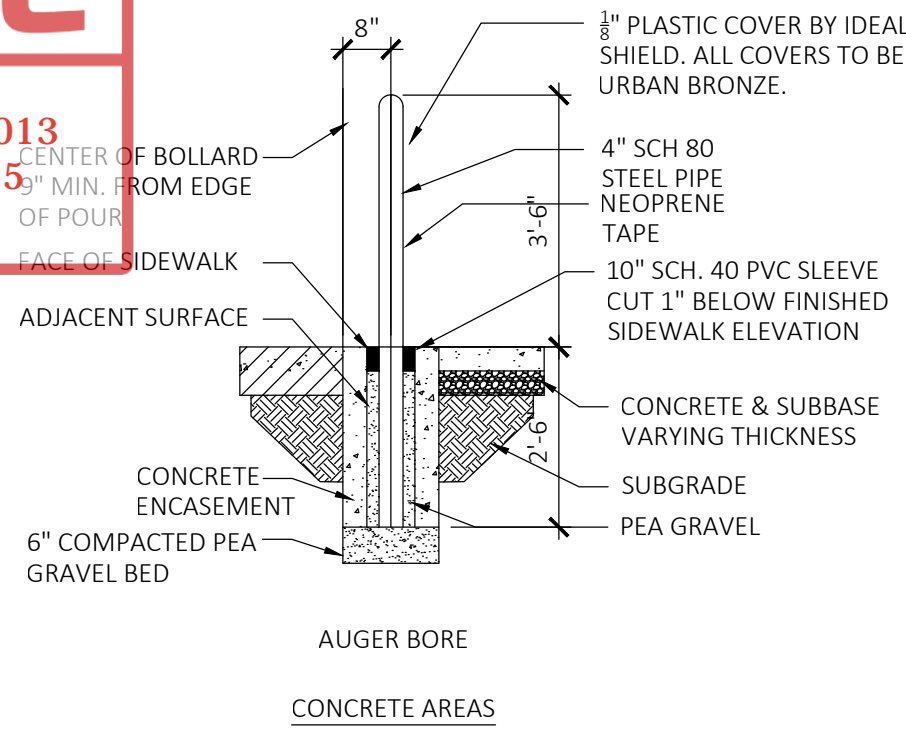


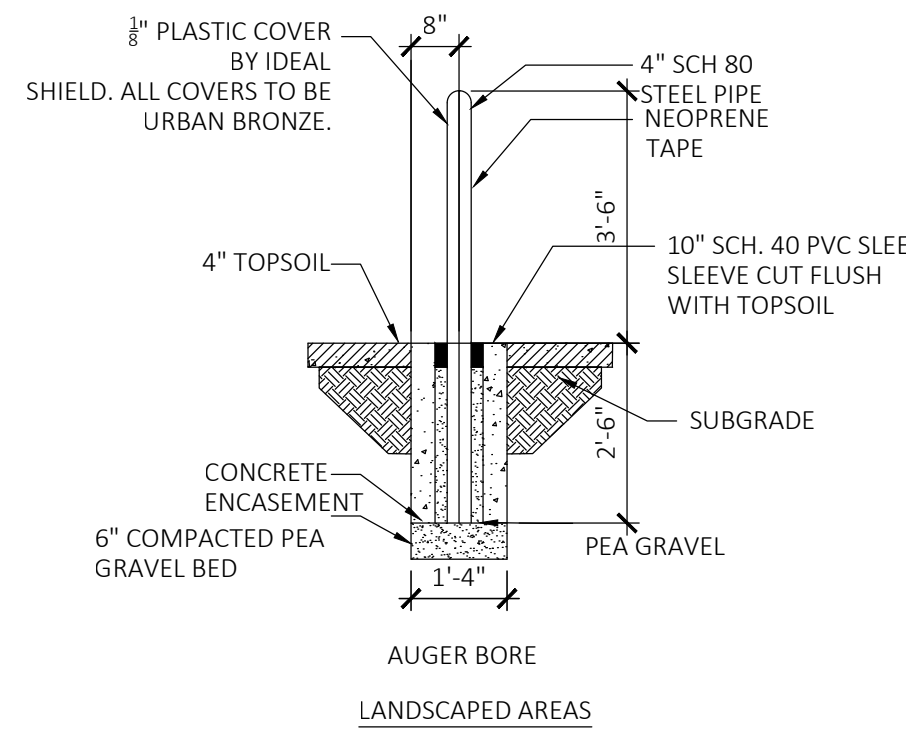
DRC

PZ25- 12000013
12/03/2025



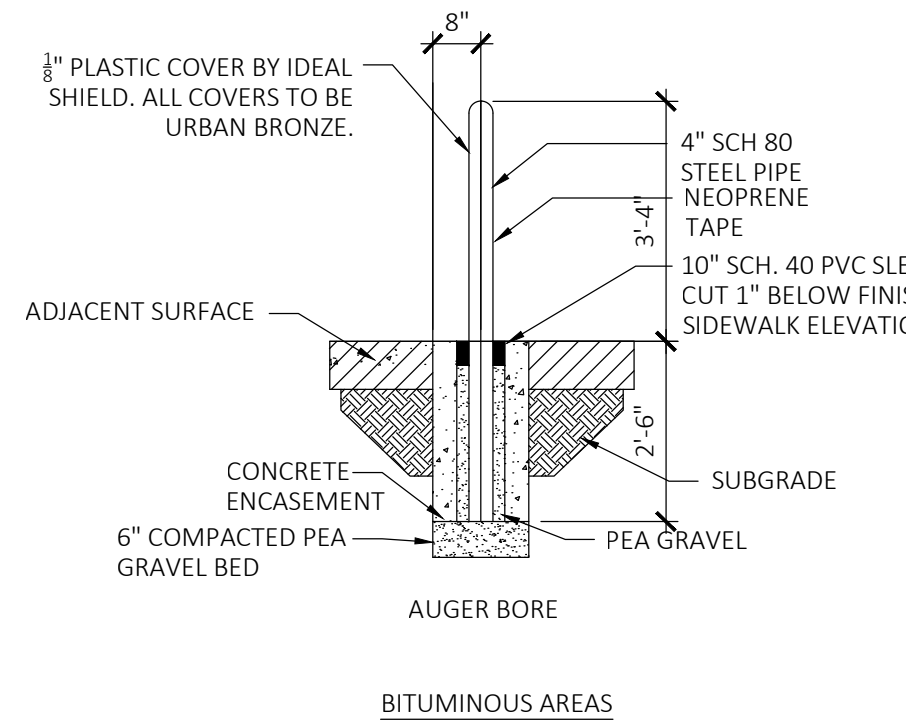
PIPE BOLLARD DETAIL - CONCRETE

SCALE: 3/8" = 1'-0"



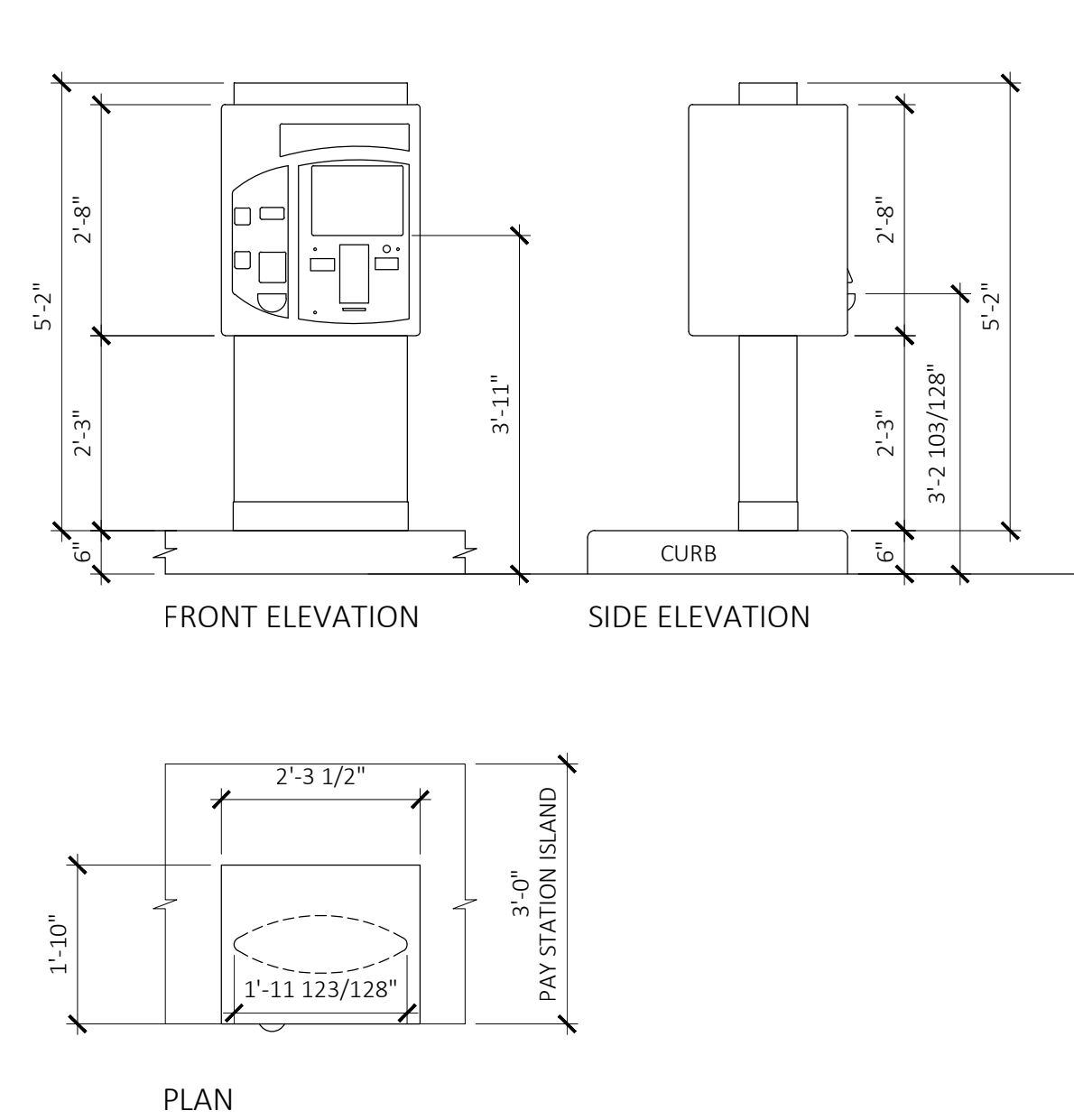
BOLLARD DETAIL - LANDSCAPE

SCALE: 3/8" = 1'-0"



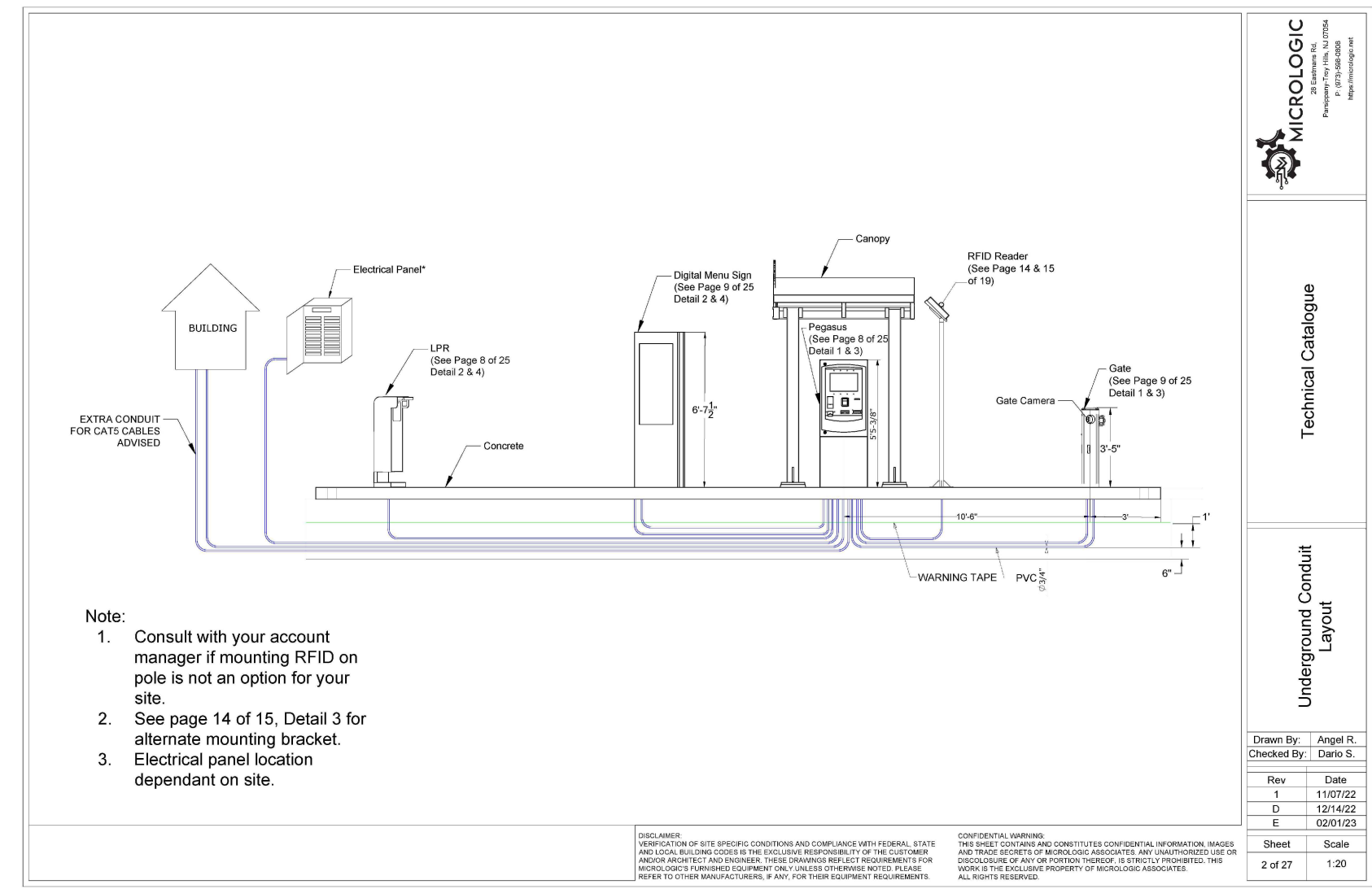
BOLLARD DETAIL - ASPHALT

SCALE: 3/8" = 1'-0"



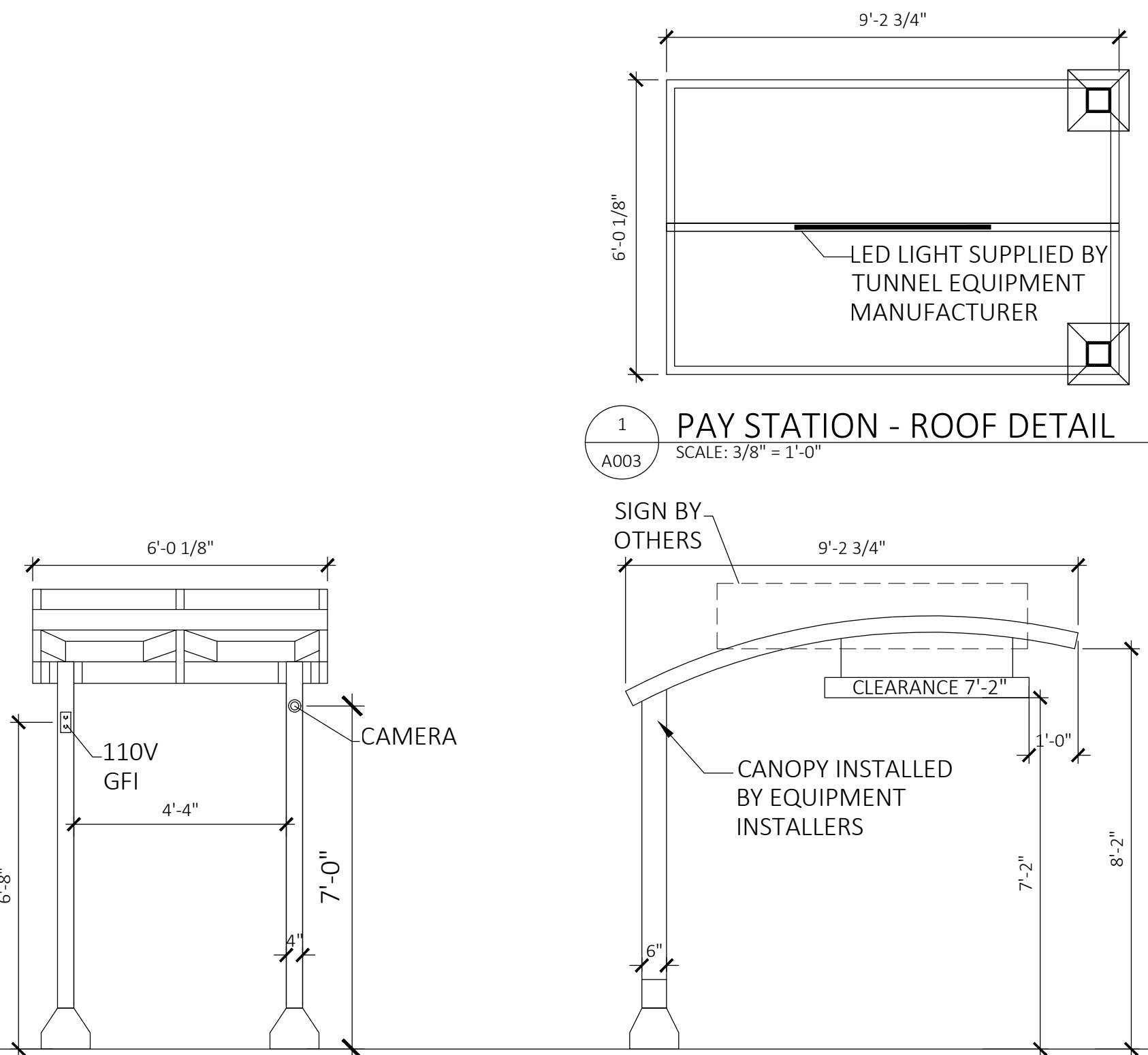
TYPICAL PAY STATION P.O.S.

SCALE: 1/2" = 1'-0"



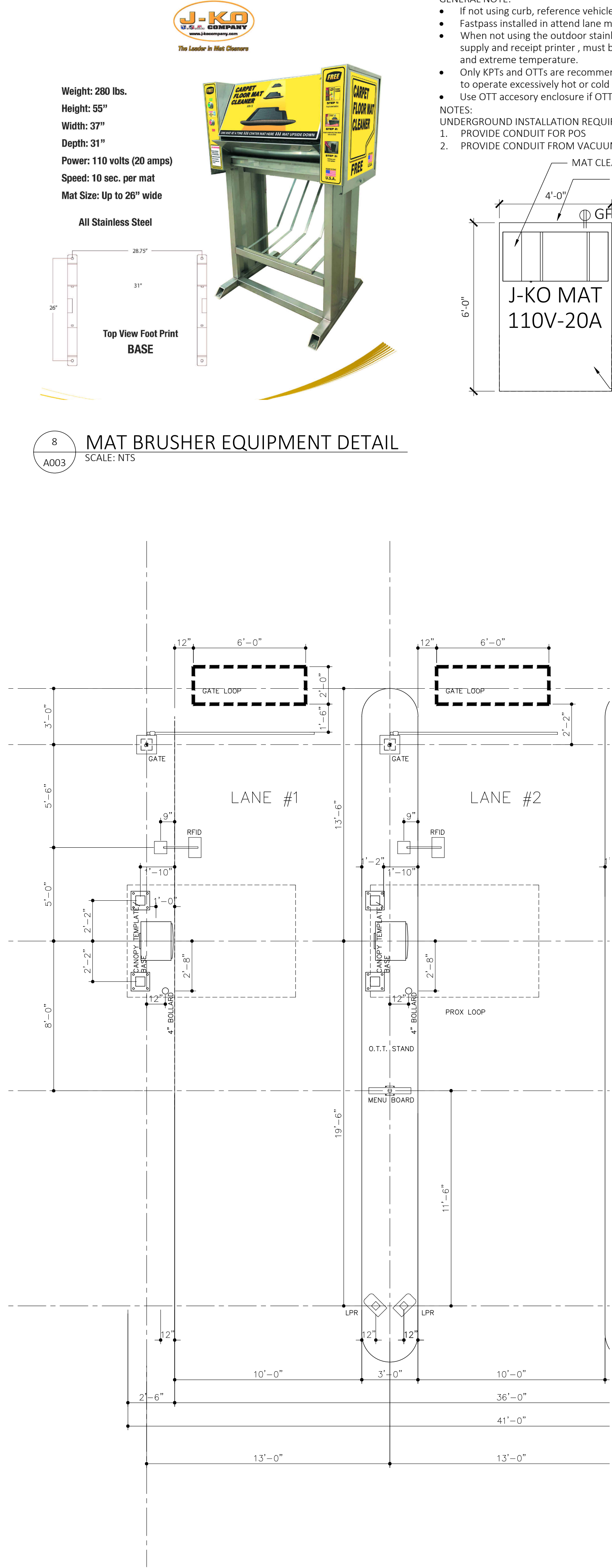
MICROLOGIC PAY STATION DIAGRAMS - REFERENCE ONLY

SCALE: NTS CONTRACTOR TO REVIEW AND INSTALL PER MANUFACTURER SHOP DRAWINGS.



PAY STATION - CANOPY ELEVATION

SCALE: 3/8" = 1'-0"

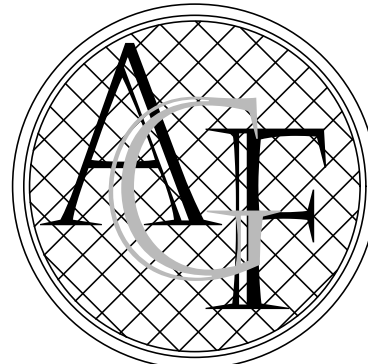


MAT BRUSHER EQUIPMENT DETAIL

SCALE: NTS

PAY STATION TYPICAL LAYOUT DETAIL

SCALE: 1/4"=1'-0"



FANJUL & ASSOCIATES, LLC
ARCHITECTURE, PLANNING & INTERIOR DESIGN

AA26000725

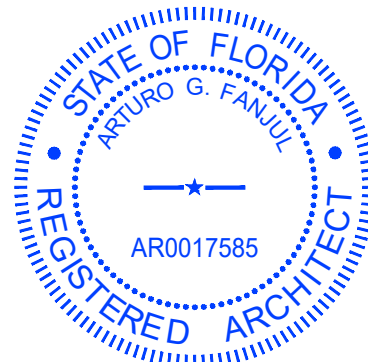
ARTURO G. FANJUL, RA
PRESIDENT

5455 SW 8TH STREET, SUITE 240
CORAL GABLES, FLORIDA 33134

PH. 305 726.8313
FAX 305 356.3686

arturo@fanjularchitects.com

"A BETTER LIFE THROUGH DESIGN"



ARTURO G. FANJUL ARO017585
STATE OF FLORIDA REGISTERED ARCHITECT

This item has been electronically signed and sealed by:

Printed copies of electronically signed, dated, and sealed documents are not considered signed and sealed and the SHA authentication code must be verified on any electronic copies.

DESIGN REVIEW



WEST POMANO

2690 W SAMPLE ROAD
POMPANO BEACH, FL 33069
ID:484221070031/32/32

SITE AMENITIES
PAYSTATION DETAILS

REVISION	NO.

DATE: 10/24/2025

SCALE:

DRAWN: AGF

CHECKED: AGF

JOB NO. 24-0704

PERMIT NO.

OWNERSHIP
OF THESE DOCUMENTS & SPECIFICATIONS AS INSTRUMENTS OF SERVICE ARE AND SHALL REMAIN THE PROPERTY OF THE ARCHITECT WHETHER THE PROJECT THEY ARE MADE FOR IS EXECUTED OR NOT. THEY SHALL NOT BE USED BY OWNER OR OTHERS ON OTHER PROJECTS OR FOR ADDITIONS TO THIS PROJECT BY OTHERS, EXCEPT BY AGREEMENT IN WRITING AND WITH APPROPRIATE COMPENSATION TO THE ARCHITECT.

A003